



Available with spot
or flood beam pattern.

Specifications:

Lumens:	10,000+ (white)
CCT:	5000K
CRI:	70+
Voltage:	10-30vDC
Rated Watts:	108W
IP Rating	IP67
Housing	Powder-Coated Die-Cast Aluminum

Razor Light Bar

Sleek. Streamlined. Powerful. Razor is the World's FIRST flush-mount light bar. Designed to be easily integrated into most existing hardtop, arch, and pilothouse designs – typically with only minor modification to production tooling. 10,000 night-piercing lumens with a streamline low profile. Razor's thermally-vented design allows OEMs to avoid the overheating and subsequent damage to hardtops that can be caused by enclosing other manufacturer's light bars in a 'pod'. Available in a surface-mount configuration, which mounts directly to un-modified hardtop surfaces and allows for an equally clean look and similar thermal performance. Available with a flood or spot beam pattern to ensure the light goes where you need it most.

Key Features:

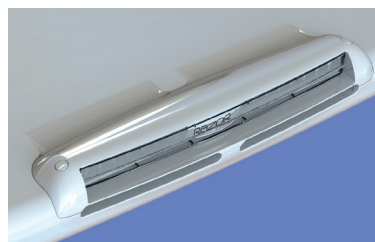
- Over 10,000+ lumens output (dimmable).
- Available with two beam patterns (spot or flood).
- Completely water sealed and IP67 compliant.
- Easy Installation – molded in or surface mountable.
- One of the lowest light bar profiles on the market.
- Constructed of marine grade powder coated cast aluminum.
- Designed for salt water environments with over 2,000+ hour of rigorous ASTM-B117 Salt Spray Chamber testing.
- Proudly designed and manufactured in the USA.
- 3 Year warranty on all Lumitec products.

Product Details:

SKU	FINISH	BEAM	VOLTAGE	12VDC	24VDC	LUMENS†
101586	White	Flood	10-30vDC	9A	4.2A	10,000
101587	White	Spot	10-30vDC	9A	4.2A	10,000

† Integrating sphere measured lumens within 1 minute of initial startup

Features:



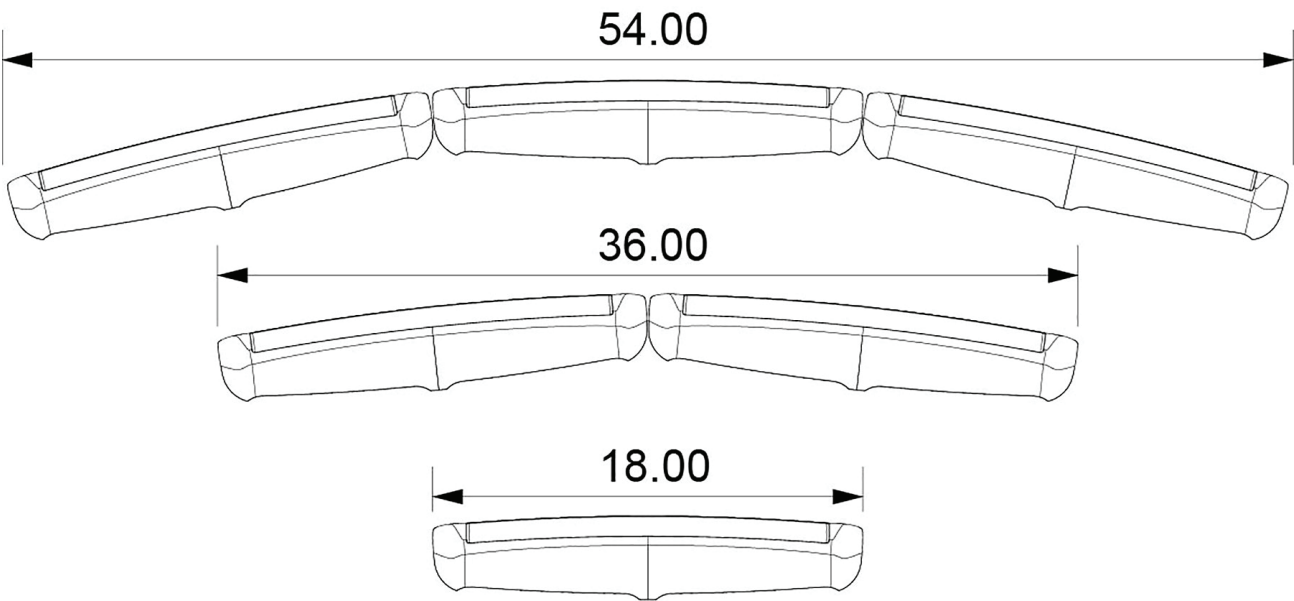
Certifications:





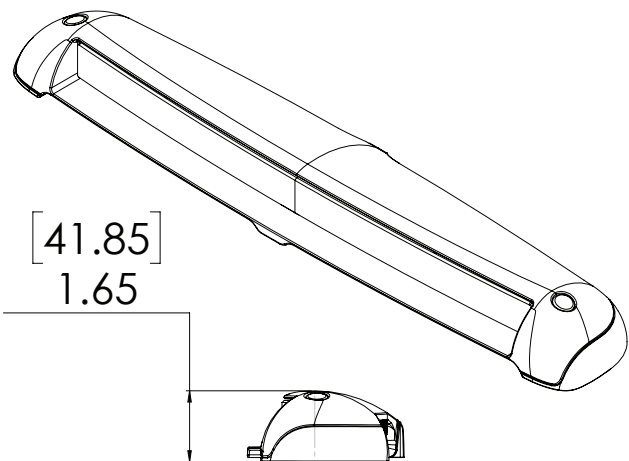
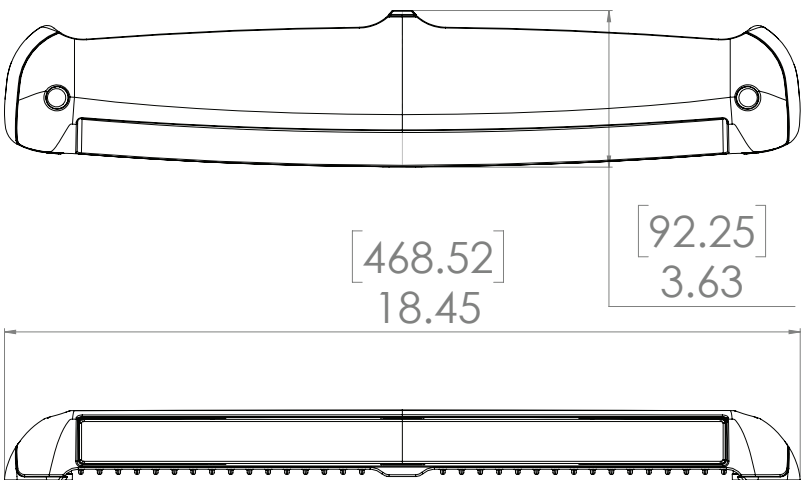
Configurations:

Razor - LED Light Bar



Dimensions:

Width: 18.45in (46.85cm)
Height: 1.65in (4.18cm)
Depth: 3.63in (9.22cm)





Beam Pattern:

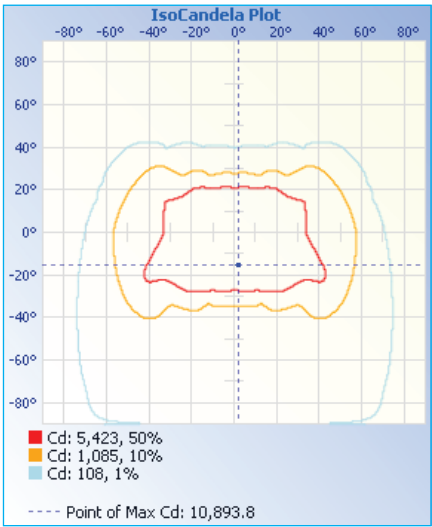
Razor - LED Light Bar

Razor - Flood Pattern

Illuminance at a Distance			
	Center Beam fc	Beam Width	
16.7ft	33.5 fc	15.1 ft	29.5 ft
33.3ft	8.42 fc	30.0 ft	58.8 ft
50.0ft	3.73 fc	45.1 ft	88.2 ft
66.7ft	2.10 fc	60.2 ft	117.7 ft
83.3ft	1.35 fc	75.1 ft	147.0 ft
100.0ft	0.93 fc	90.2 ft	176.5 ft

■ Vert. Spread: 48.6°
■ Horiz. Spread: 82.9°

Illuminance at Distance



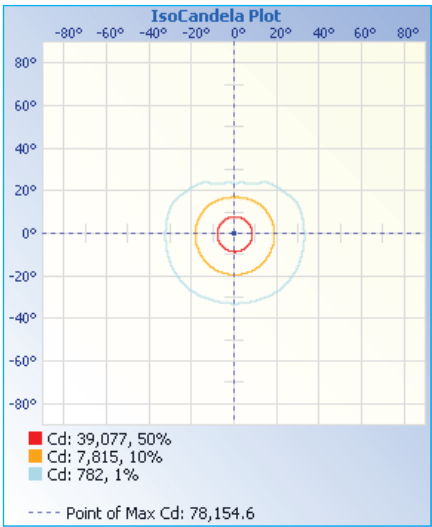
Iso Candela Plot

Razor - Spot Pattern

Illuminance at a Distance			
	Center Beam fc	Beam Width	
16.7ft	280 fc	4.8 ft	4.8 ft
33.3ft	70.5 fc	9.6 ft	9.6 ft
50.0ft	31.3 fc	14.4 ft	14.5 ft
66.7ft	17.6 fc	19.3 ft	19.3 ft
83.3ft	11.3 fc	24.1 ft	24.1 ft
100.0ft	7.82 fc	28.9 ft	28.9 ft

■ Vert. Spread: 16.4°
■ Horiz. Spread: 16.5°

Illuminance at Distance



Iso Candela Plot