

# MORAY FLEX LIGHTING

## Moray Flex Lighting

The Moray Flex Light is the only RGBW flex light in the world to have an internal color/output controller. This means that Moray can be connected directly to a 2-wire DC electrical system, allowing color and dimming control with any standard on/off switch with no external driver. And because it's also compatible with our Poco Digital Lighting Control system, Moray can easily be controlled from an on-board MFD, smartphone, or tablet. Moray is the flexible, versatile, reliable solution that reduces cost, time and complexity.

### TOP EMITTER

0.65" W X 0.65" D X (8 available lengths)

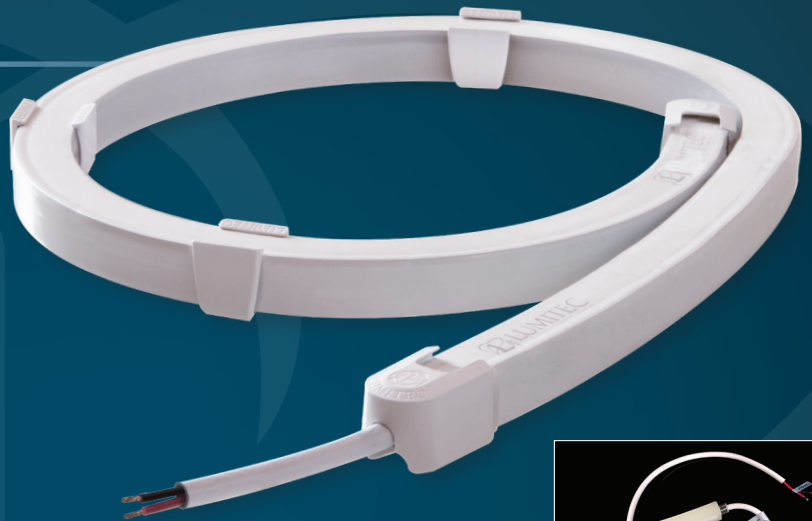
### Moray Flex Light

LED Flex Lighting

Output: Full-color Spectrum  
 Lumens: 225-900  
 Available Sizes: 1.5', 3', 4.5', 6', 7.5', 9', 10.5', 12'  
 Voltage: 10-14vDC  
 12vDC Amps: 687mA - 2.75A  
 CRI: 80+  
 CCT: 5000

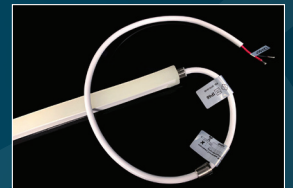
### Available Lengths

SKU	Output Color	Length
101647	Spectrum RGBW	1.5'
101640	Spectrum RGBW	3'
101648	Spectrum RGBW	4.5'
101641	Spectrum RGBW	6'
101649	Spectrum RGBW	7.5'
101642	Spectrum RGBW	9'
101650	Spectrum RGBW	10.5'
101643	Spectrum RGBW	12'



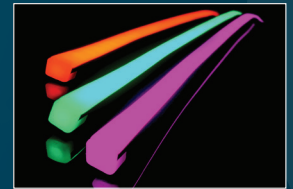
### 2-Wire Hookup

Easy to install 2-wire hook up simplifies wiring and reduces installation time.



### Built-in Color Controller

A fully integrated color controller with power management circuitry provides full color control without the need for bulky external control modules.



- Full Color Spectrum
- Power Line Installation
- Timed Toggle Protocol
- IP Rated
- Dimming
- Color Cycle
- 2-Wire Hookup
- European Conformity
- 3 Year Warranty

Connectors and mounting screws supplied.

