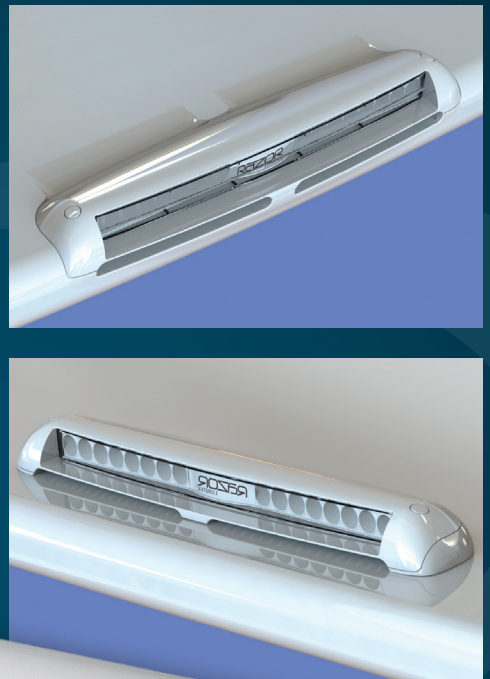


RAZOR LIGHT BAR

Razor Light Bar - Sleek. Streamlined. Powerful.

Razor is the only light bar specifically designed for marine applications. Constructed from one solid piece of die-cast aluminum to reduce potential failure points and completely water sealed with over 2000 hours of salt spray testing. Designed to have a clean low profile, so it will not interfere with other electronics on your hardtop and available in a choice of a flood or spot beam patterns.

Razor can be easily integrated into most existing hardtop, radar arch, brow, or other surface. Alternatively, use Razor's surface mount kit for a sleek, low profile installation on existing flat or slightly crowned tops. Razor is versatile and can be mounted forward or aft facing, or even inverted and downward facing.



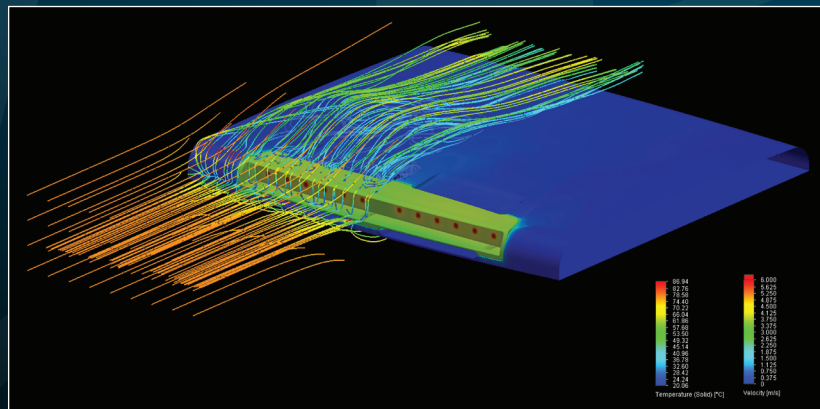
Available with a spot or flood beam pattern



Razor LED Light Bar

Output:	White
Lumens:	10,000+
Voltage:	10-30vDC
12vDC Amps:	9A
24vDC Amps:	4.2A
CCT:	5000K
CRI:	70+

10,000 Lumens
(dimming)



Advanced Thermal Management

Razor has been designed and analyzed as a complete system – with careful consideration of the top in which it is mounted. This means that Razor delivers maximum performance while protecting hardtops and pods from dangerously high temperatures.

RAZOR
LUMITEC

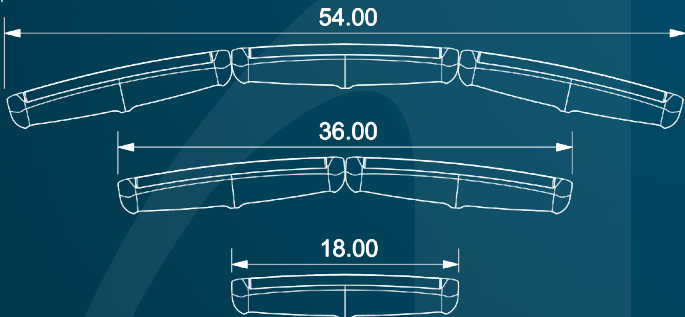
RAZOR LIGHT BAR

80% LOWER PROFILE

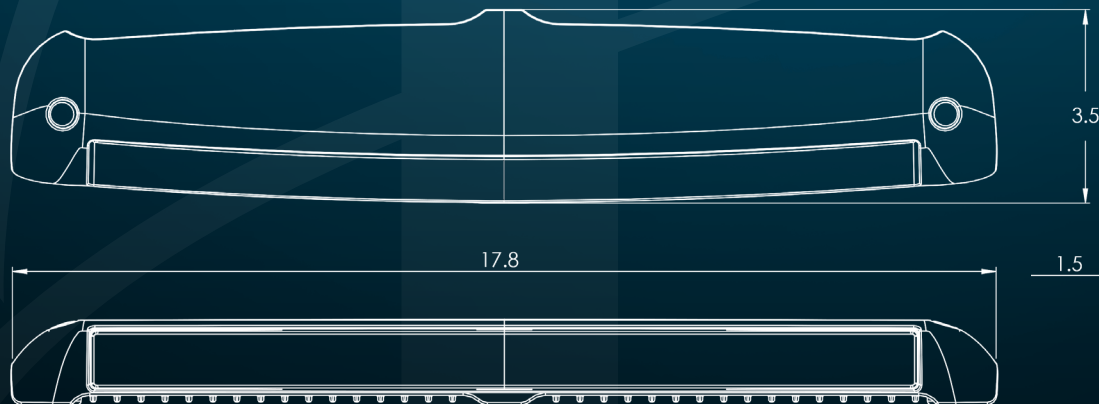
Than most other light bars on the market

Razor's integrated design delivers more power with a cleaner, more streamlined look. Up to 80% more streamlined in fact. As the images to the right demonstrate Razor allows builders to eliminate light pods which must be molded and added separately, saving many hours of costly finishing labor. Razor simply drops into an as-molded recess. CAD models of mold plugs or tooling inserts may be provided upon request.

Configurations:



Dimensions:



RAZOR
LUMITEC

Side Profile

Competitor Products

Lumitec Razor

Competitor Pod Design

Lumitec Razor

80% Lower Profile with Superior Thermal Management

