

CAPRI3/CAPRERA3

SPREADER LIGHTS

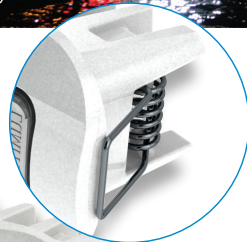
All-new Capri3/Caprera3 Series.

Building on the huge success of the Capri/Caprera line of spreader lights, Lumitec is introducing the all-new Capri3/Caprera3 series. Now with 1,200 lumens, a smaller, more thermally efficient powder-coated die-cast aluminum housing and an improved optical beam pattern. But the innovation doesn't stop there; Capri3 has our innovative, easy fit butterfly clip mounting system with no exposed fasteners that greatly simplifies the installation process. Capri3/Caprera3 is IP67 compliant and PLI enabled (Poco compatible) on many models.

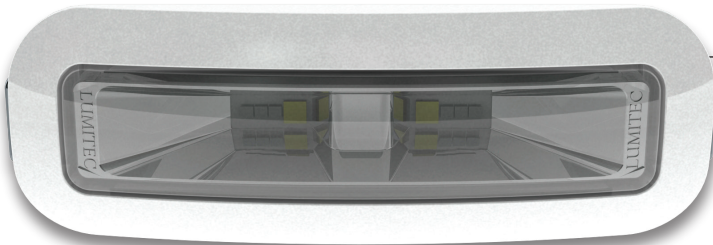
Capri3 innovative easy fit butterfly clip mounting system.

Capri3

Caprera3



Available with black housing.

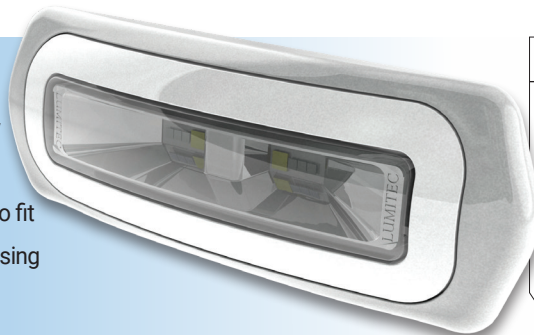


No Exposed Fasteners

The innovative, easy fit butterfly clip mounting system of the new Capri3 allows for no exposed fasteners showing on the front of the light, giving a cleaner look to your hardtop, tower or arch.

Capri Retro Fit Kit

Upgrading from a Capri or Capri2 light is easy with the Capri Retro Fit Kit (sold separately). Simply place the new Capri3 light into the retro fit housing and install as you would the Capri3 using the existing innovative easy fit butterfly clips.



Capri3/Caprera3 - Spreader Light

Output:	White w/dimming, White non dimming White/Red, White/Blue, RGBW Spectrum
Lumens:	1,200
Voltage:	10-30vDC
12vDC Amps:	1A
24vDC Amps:	0.5A
CCT:	5000K
CRI:	70+