

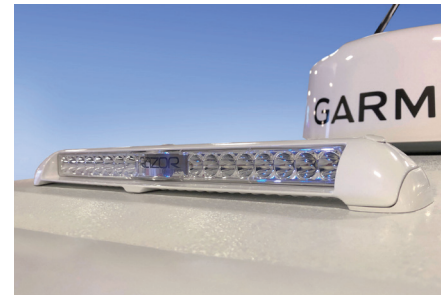
# RAZOR LIGHT BAR

RAZOR LIGHT BAR

## Razor Light Bar - Sleek. Streamlined. Powerful.

Razor is the only light bar specifically designed for marine applications. Constructed from one solid piece of die-cast aluminum to reduce potential failure points and completely water sealed with over 2000 hours of salt spray testing. Designed to have a clean low profile, Razor will not interfere with other electronics on your hardtop. Available with flood or spot beam patterns in a white or black finish.

Razor is very versatile and can be mounted forward or aft facing, or even inverted and downward facing. It can be easily integrated into most existing hardtop, radar arch, brow, or other surface. Alternatively, use Razor's supplied surface mount kit for a sleek, low profile installation on existing flat or slightly crowned tops.



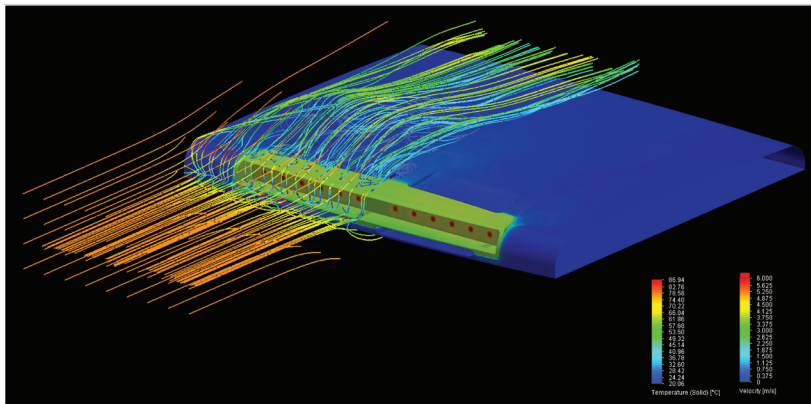
### Razor LED Light Bar

Output:	White
Lumens:	10,000+
Voltage:	10-30vDC
12vDC Amps:	9A
24vDC Amps:	4.2A
CCT:	5000K
CRI:	70+
PLI:	Yes

Available with spot or flood beam pattern and two finish options.

**10,000 Lumens**  
(dimming)

**Poco Compatible**  
(PLI Enabled)



## Advanced Thermal Management

Razor has been designed and analyzed as a complete system – with careful consideration of the top in which it is mounted. This means that Razor delivers maximum performance while protecting hardtops and pods from dangerously high temperatures.

# RAZOR LIGHT BAR

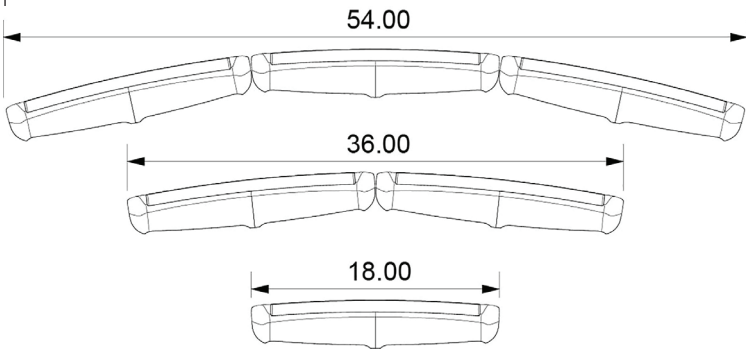
RAZOR LIGHT BAR

## 80% LOWER PROFILE

Than most other light bars on the market

Razor's integrated design delivers more power with a cleaner, more streamlined look. Up to 80% more streamlined in fact. As the images to the right demonstrate Razor allows builders to eliminate light pods which must be molded and added separately, saving many hours of costly finishing labor. Razor simply drops into an as-molded recess. CAD models of mold plugs or tooling inserts may be provided upon request.

### Configurations:



### Dimensions:

