



# SEABLAZE TYPHOON

UNDERWATER LIGHTS

## SeaBlaze Typhoon Through-Hull Underwater Light

Flush Mount

SeaBlaze Typhoon sets a new standard for performance, reliability, and value in through-hull underwater lights. Typhoon delivers more than 10,000 measured lumens (white), and a modular quick-change design for easy in-water service and upgrades. Our innovative internal relay simplifies wiring and significantly reduces installation costs and complexity. The solid bronze housing only requires a 3" mounting hole (3.625" on flush mount design). Full-color control using any standard on/off switch, or use Lumitec's Poco Digital Lighting Control Module (sold separately) for even more advanced features.

**10,000+**  
Lumens



Surface Mount

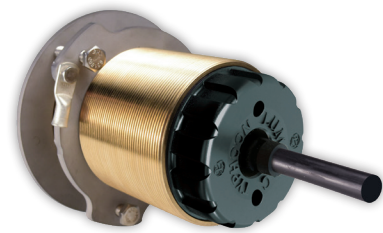
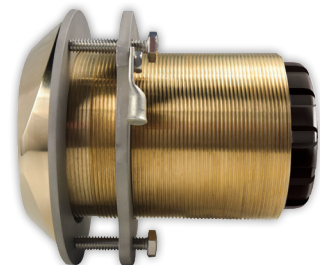
**PLI Enabled,  
Poco Compatible.**

## SeaBlaze Typhoon Through-Hull Underwater Light

Output:	Dual-Color (White/Blue) Full-Color Spectrum
Lumens:	10,000+
Voltage:	10-30vDC
12vDC Amps:	10A
24vDC Amps:	4.5A
CCT:	6500K
CRI:	70+



Available with Surface or Flush Mount Bezel



Available in Dual-Color or Full-Color Spectrum

3" Mounting hole (3.625" flush mount), and accommodates up to 3.25" hull thickness (3.75" flush mount).



## Superior Design

Typhoon will accommodate any hull thickness up to 3". The jam nut locking ring system allows the light to be installed on angled hulls and a tool-free end-cap design makes accessing the light for in-water service and upgrades easy and convenient.